



Effusion Cell EF40 C1

**Constant, reproducible
evaporation rates**

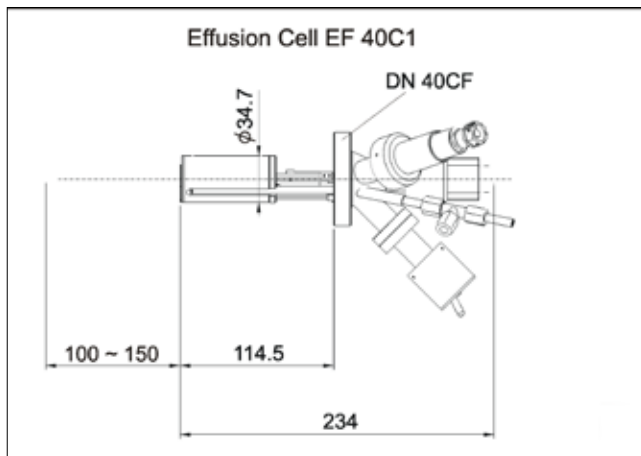
highly reproducible & reliable
suitable for use in any MBE system
No free construction
isolated manual or electro-pneumatic shutter
integral water cooling

Henniker Scientific

EF40 C1 Effusion Cell

EF40 C1 Specifications

Heater:	Ta wire
Thermocouple:	Type C (W/Re, 5/26%)
Typical operating temp:	250 to 1500°C
Max. outgassing temp:	1600°C
Temperature stability:	+/- 1°C
Mounting flange:	DN-40-CF
In-vacuum OD:	35mm
In-vacuum length:	as specified
Power consumption:	300W
Working distance:	100 to 150mm
Degassing without water:	500°C



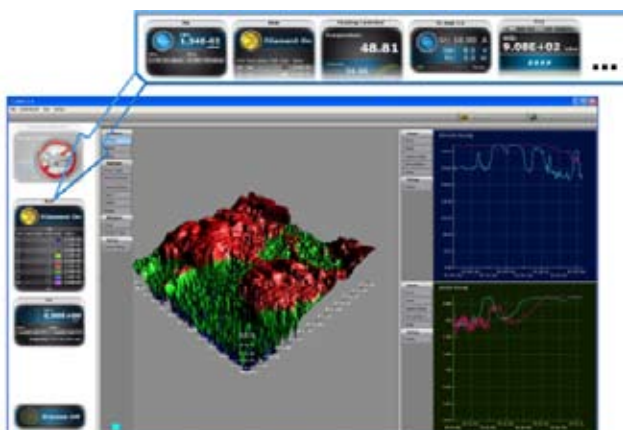
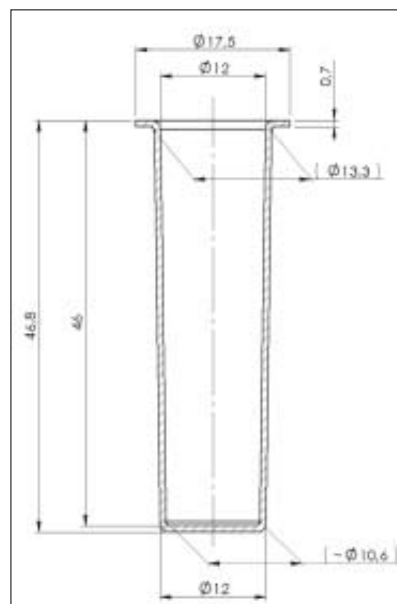
Heater Power Supply

Built-in PID controller (Eurotherm 2048)
Auto or manual temperature control
Built-in timer with standby mode
19 inch rack mounted



Additional Information

Medium temp cell available in 5cc size
PBN, Al_2O_3 & other materials
Isolated shutter, auto or manual
Integral water cooling
Optional linear shift



Creator Software Interface

- full access to all instrument parameters
- data store/save/recall functions

Our Creator software operates just a single instrument or multiple devices simply by activating the appropriate module, building to a single, powerful software platform that controls a complete vacuum system including pumps, gauges, valves and all added instruments.

Henniker Scientific Ltd.

Cavendish House, Birchwood Park, Warrington WA3 6BU, UK
Tel. +44(0) 1925 811 254 Fax. +44(0) 1925 800 035
www.henniker-scientific.com info@henniker-scientific.com