



# Electron Flood Source FS40

## Charge compensation for XPS/AES & SIMS

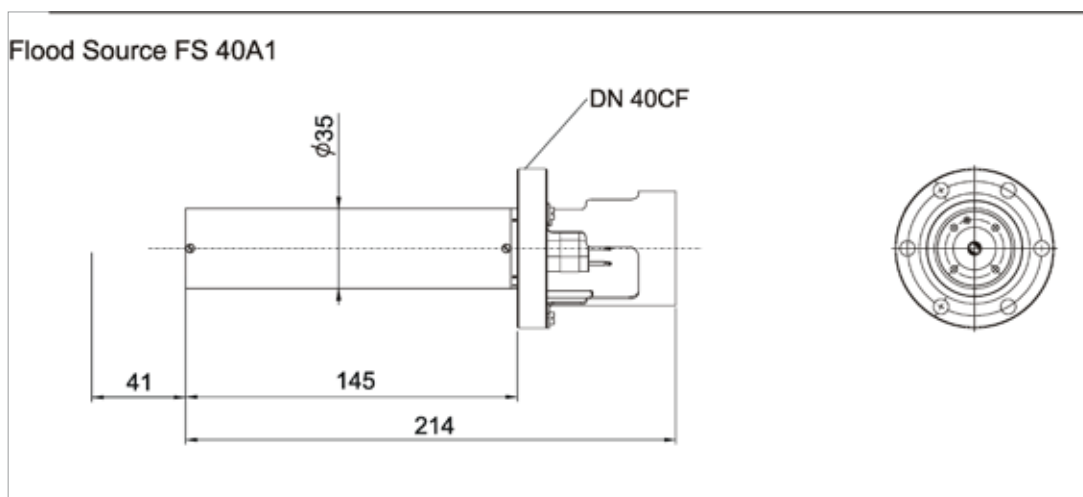
- high emission current
- selectable energy ranges  
(0-10eV & 10-500eV)
- stabilised emission
- beam profile control
- choice of shield materials
- custom insertion lengths
- software control

# Henniker Scientific

## FS40 Electron Flood Source

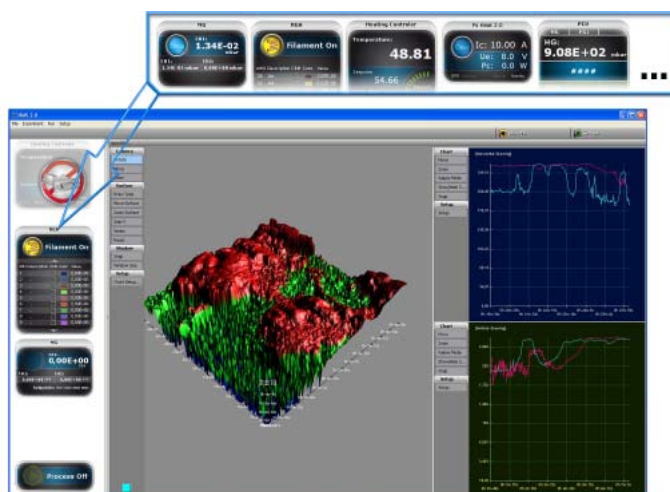
### FS40 Flood Source

Spot Size :	15mm-25mm		
Energy Range:	0-10eV,	resolution	0.01eV
	10-500eV,	resolution	0.1eV
Emission Current:	1-500uA,	resolution	1uA
Focus Voltage:	300-700V,	resolution	0.1V
Wehnelt Voltage:	0-30V,	resolution	0.1V
Mounting Flange:	DN-40-CF		
Insertion Depth:	145mm	can be customised	
Working Distance:	40mm		
Bakeout Temperature:	250 °C		



### FS40 Interface

19 inch Rack Mounting  
Large LCD Display with Store & Recall Functions



### Creator Software Interface

- full access to all instrument parameters
- data store/save/recall functions

*Our Creator software operates just a single instrument or multiple devices simply by activating the appropriate module, building to a single, powerful software platform that controls a complete vacuum system including pumps, gauges, valves and all added instruments.*

Henniker Scientific Ltd.

Cavendish House, Birchwood Park, Warrington WA3 6BU, UK  
Tel. +44(0) 1925 811 254 Fax. +44(0) 1925 800 035  
www.henniker-scientific.com info@henniker-scientific.com