



Extractor Ion Source IS40 C1

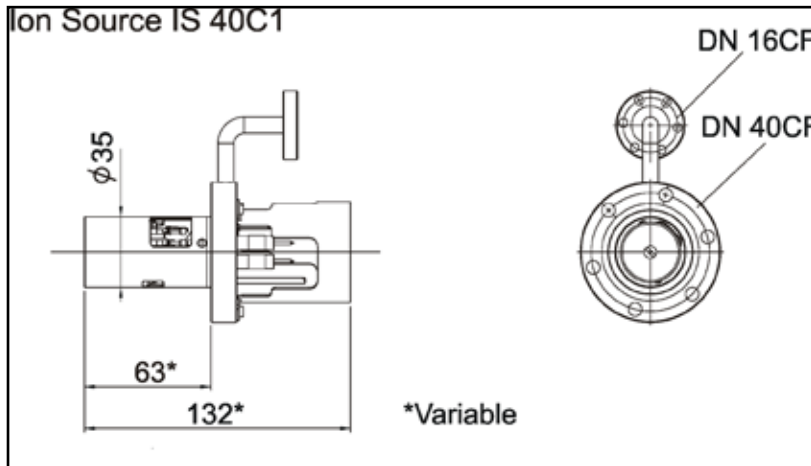
sample cleaning & preparation

- 0.15keV to 5keV energy range
- operation with inert & reactive gases
- long lifetime
- high stability
- custom insertion depth options
- software control
- auto store & recall of settings

IS40 C1 Extractor Ion Source

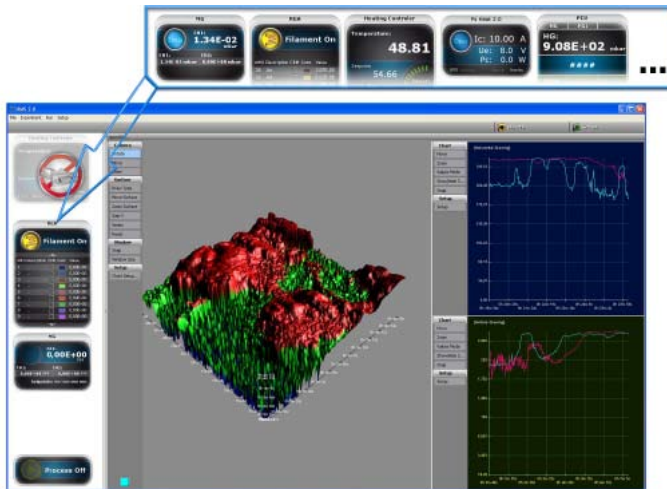
IS40 C1 Source

Ion Current:	15 to 25 μ A/cm ² (Argon)		
Beam Energy (Ueneg):	0.15keV to 5keV,	resolution	0.01keV
e-Emission Current (Iemis):	0.01mA to 10mA,	resolution	0.01mA
Focus Voltage (F):	300 to 700V,	resolution	0.1V
Mounting Flange:	DN-40-CF		
Insertion Depth:	63mm (custom on request)		
Bakeout Temp:	250°C		
Timer (dual mode):	0s to 9.99hr		



IS40 C1 Interface

19 inch Rack Mounting
Large LCD Display with Store & Recall Functions



Creator Software Interface

- full access to all instrument parameters
- data store/save/recall functions

Our Creator software operates just a single instrument or multiple devices simply by activating the appropriate module, building to a single, powerful software platform that controls a complete vacuum system including pumps, gauges, valves and all added instruments.

Henniker Scientific Ltd.

Cavendish House, Birchwood Park, Warrington WA3 6BU, UK
Tel. +44(0) 1925 811 254 Fax. +44(0) 1925 800 035
www.henniker-scientific.com info@henniker-scientific.com